

Mushroom lobe handles

“Soft-touch” technopolymer with magnifying lens

MATERIAL

High resilience polypropylene based (PP) technopolymer, coated with “soft-touch” thermoplastic elastomer (TPE) chemically bonded, hardness 70 Shore A, black colour, matte finish.

Raw material coating suitable for contact with food (FDA CFR.21 and EU 10/2011).

MAGNIIFYNG LENS

Transparent polyamide based (PA-T) technopolymer. Resistant to solvents, oils, greases, petrol and other chemical agents (avoid contact with alcohol). Press-fit assembly. It improves the visibility of the labels.

STANDARD EXECUTION

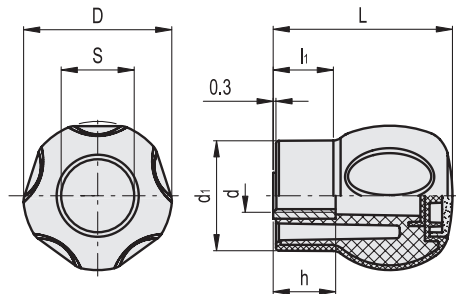
Brass boss, threaded hole.

ACCESSORIES ON REQUEST

Self-adhesive labels MA. on page 551 with standard marks and symbols to be ordered separately.

LABEL ASSEMBLY INSTRUCTIONS

Stick the self-adhesive label (printed on the adhesive side) to the inner surface of the magnifying lens by pressing from the centre to the external side to avoid air bubbles. Assemble the magnifying lens to the handle face recess by gently tapping with a wooden or plastic mallet, until firmly in place. The label is therefore protected by the watertight magnifying lens.



Code	Description	D	L	d6H	S	d1	h	l1	△
245104	EBK.43 B-M8-H-SOFT	43	53.5	M8	20	32.5	18	17.5	72
245106	EBK.43 B-M10-H-SOFT	43	53.5	M10	20	32.5	18	17.5	71
245204	EBK.50 B-M8-H-SOFT	50	60	M8	25	37	20	20	85
245206	EBK.50 B-M10-H-SOFT	50	60	M10	25	37	20	20	82
245208	EBK.50 B-M12-H-SOFT	50	60	M12	25	37	20	20	80